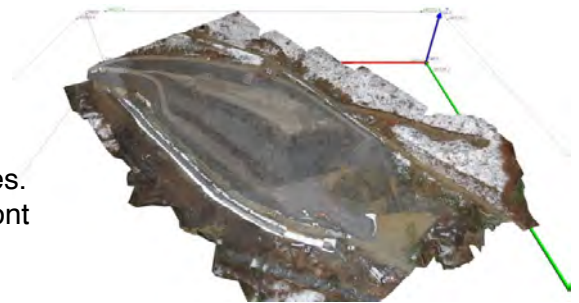
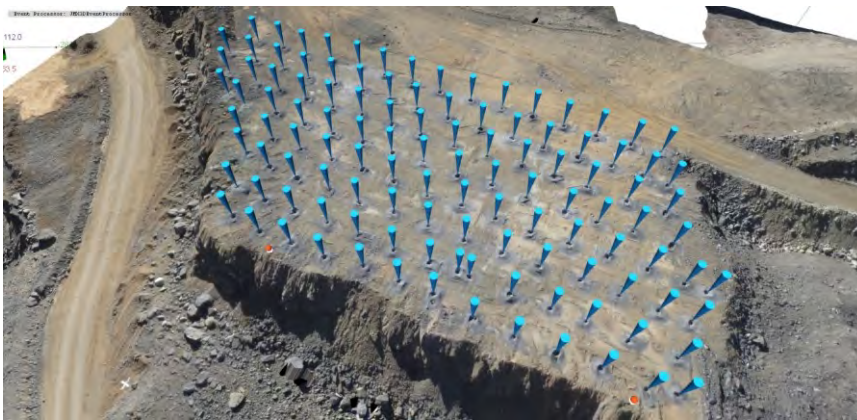


Aerial 3D imaging

Blast Design and Blast Analysis with 3D images

3D images from drones are a perfect survey of large blast sites. Poor blasting results are often caused by inaccuracy of the front row hole placement and inaccurate blast pattern geometry.

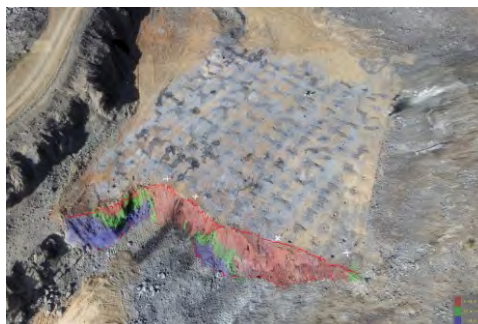
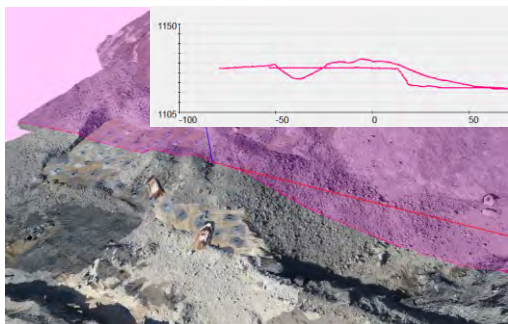


Features

- Face profiles (burden diagrams and maps)
- Volume to blast
- Pre-post blast comparison
- Quantification of muckpile (movement, volume, swell)
- Power trough
- Seamless data flow

Avoidance of

- Fly rock
- Poor fragmentation
- Poor cast/blast performance
- Loss of grade control
- Wall damage
- High vibration



3GSM – Simply Measure!