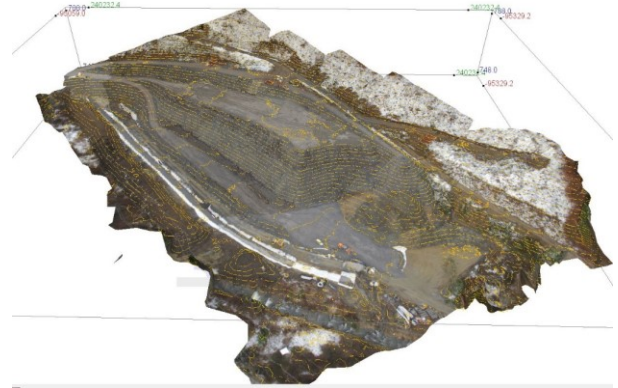
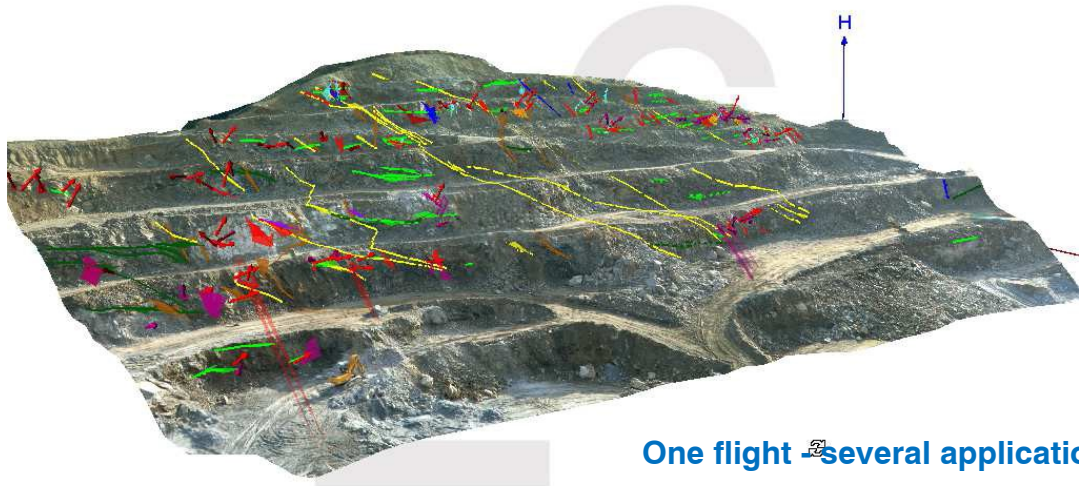


Aerial 3D imaging

Surveying and geological mapping with 3D images



3D images combine surface measurements with digital photographs. With it large areas are quickly and comprehensively surveyed. The same data is re-used for geologic mapping, blast design, blast analysis, and volumetrics.

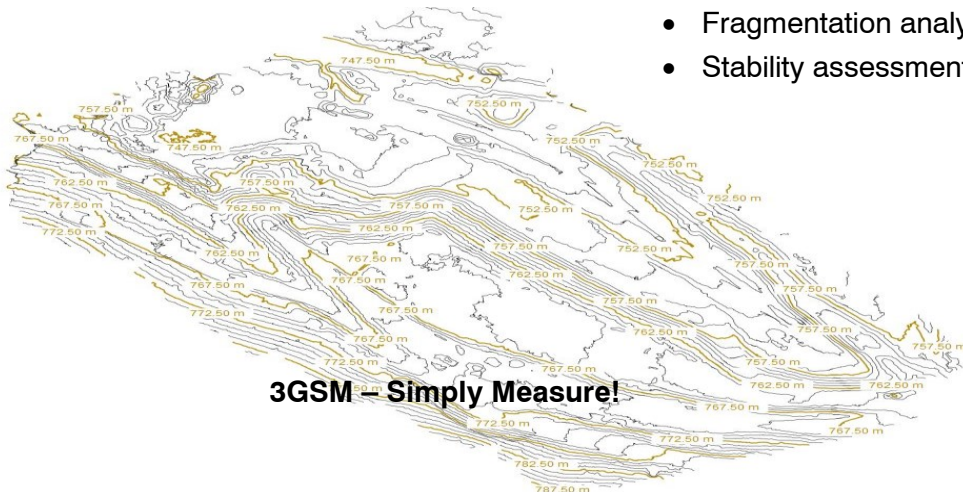


Features

- High resolution documentation
- Automatic processing
- Auto-calibration
- Exports to standard CAD formats
- Interfaces directly with several applications

One flight ~~to~~ several applications

- Surveying
- Geological mapping
- Blast planning
- Blast analysis
- Volumetrics
- Fragmentation analysis
- Stability assessment



3GSM - Simply Measure!