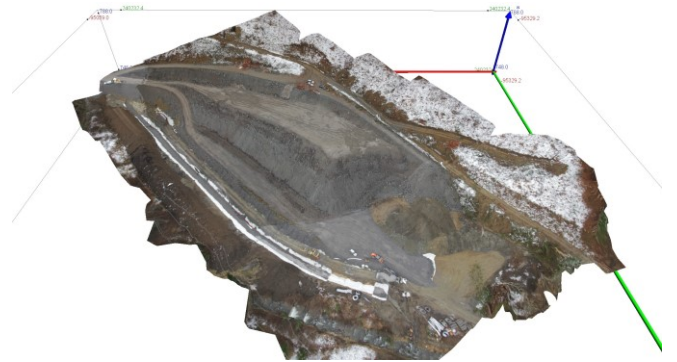
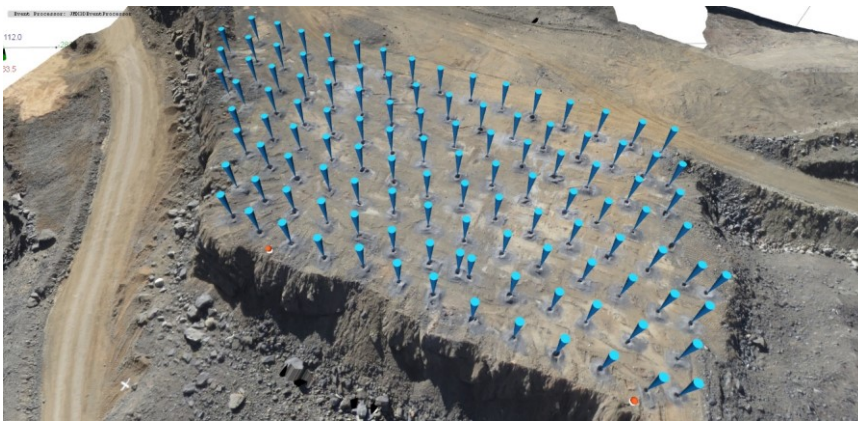


## Aerial 3D imaging

### Blast Design and Blast Analysis with 3D images



3D images from drones are a perfect survey of large blast sites. Poor blasting results are often caused by inaccuracy of the front row hole placement and inaccurate blast pattern geometry.

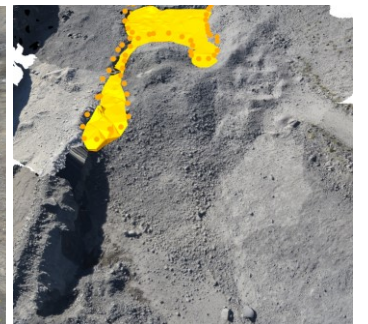
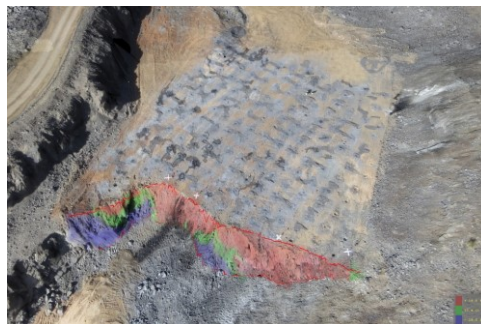
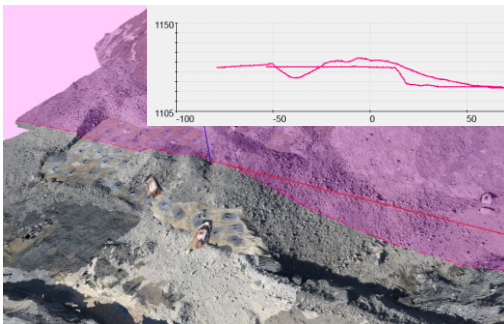


### Features

- Face profiles (burden diagrams and maps)
- Volume to blast
- Pre-post blast comparison
- Quantification of muckpile (movement, volume, swell)
- Power trough
- Seamless data flow

### Avoidance of

- Fly rock
- Poor fragmentation
- Poor cast/blast performance
- Loss of grade control
- Wall damage
- High vibration



**3GSM – Simply Measure!**